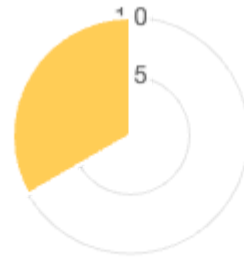




S&C Electric

ESG/Environmental Practices

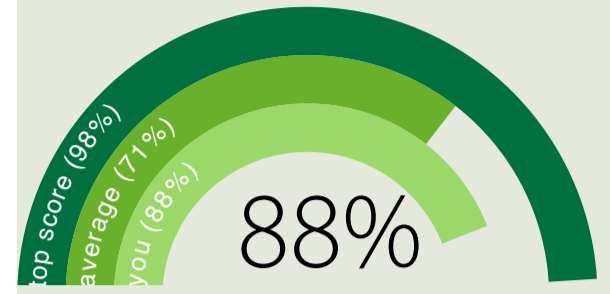
2020-10-15



Energy & GHG Emissions
Water Waste

Improvement planning

General manufacturing



source: <https://www.tspproject.org/>

General manufacturing



Governance & management

96%

(0.15)



Product/process design

66%

(0.25)



Sourcing

87%

(0.1)



Production

98%

(0.25)



Distribution & shipping

44%

(0.15)



End-of-life

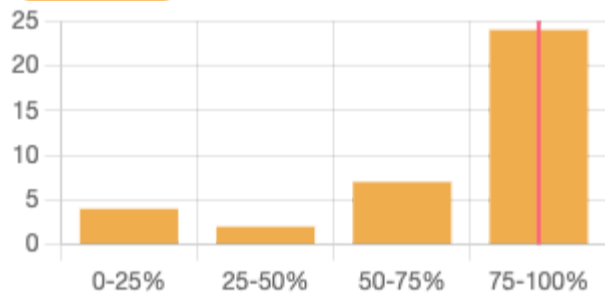
66%

(0.1)

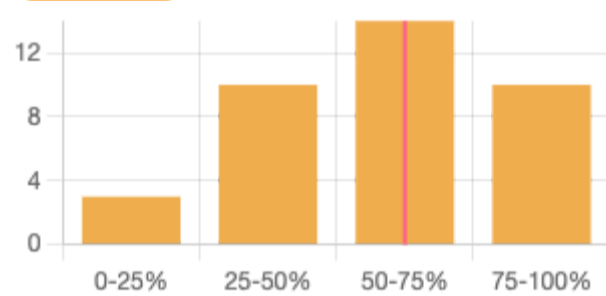
88%



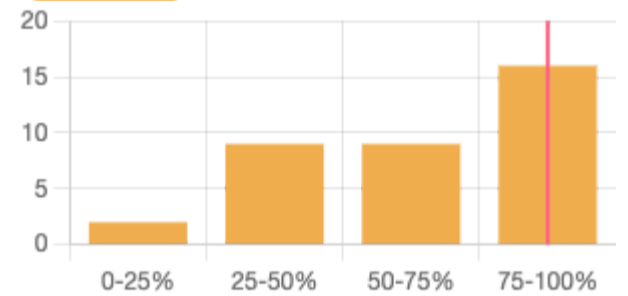
Governance & management



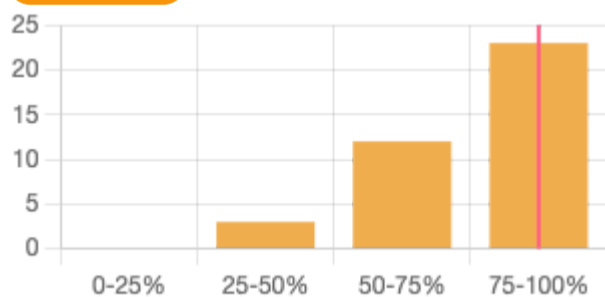
Product/process design



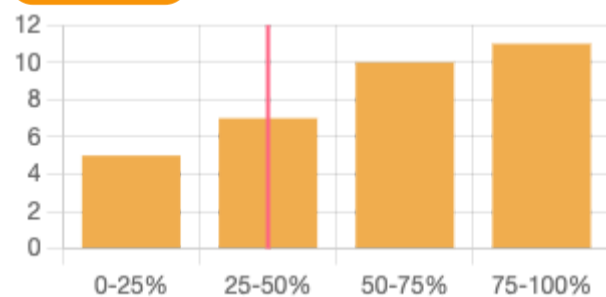
Sourcing



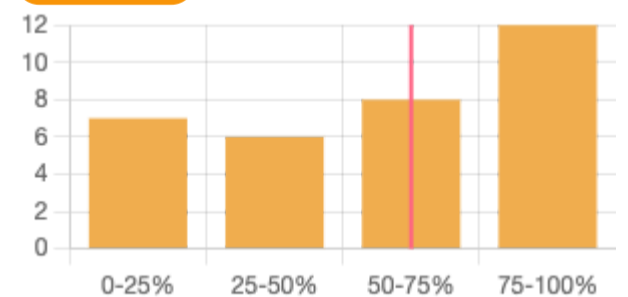
Production



Distribution & shipping



End-of-life



Benchmarking is based on responses from 38 companies responding on practices in the industry segment.